

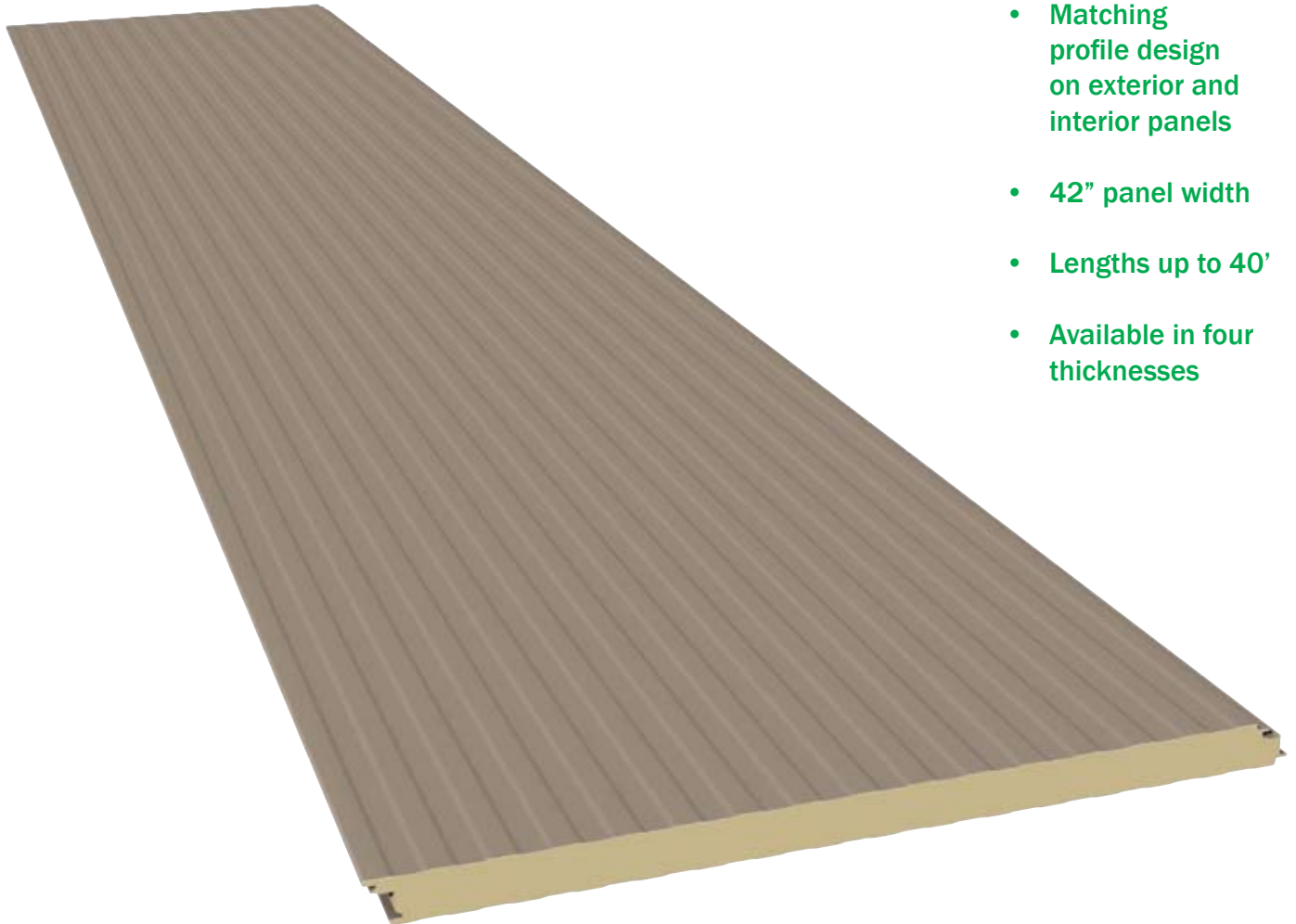
VP WALL SYSTEMS

STYLE

THERMALCLAD PLANKED PANEL

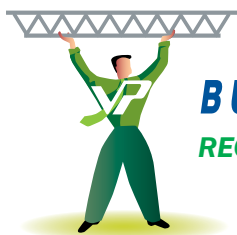
FEATURES

AN ATTRACTIVE AND DURABLE SANDWICH
PANEL IDEAL FOR EXTERIOR WALLS OR INTERIOR
PARTITION APPLICATIONS



- Matching profile design on exterior and interior panels
- 42" panel width
- Lengths up to 40'
- Available in four thicknesses

VP's Planked ThermalClad panel is an energy-efficient panel with matching profiles on both exterior and interior sides.



BUILD SMART BUILD GREEN WITH VP
RECYCLED STEEL COOL PAINTS ENERGY SAVING INSULATION



MATCHING PANEL FACINGS ENSURE SYMMETRY FROM OUTSIDE TO INSIDE, OR ROOM TO ROOM IN PARTITION APPLICATIONS

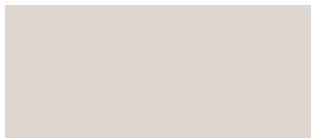
THERMALCLAD PLANKED INSULATED WALL PANEL

VP's ThermalClad Planked Panels feature sturdy 26 gauge steel panels on both exterior and interior faces. The exterior panel is factory-formed with vertical lines to present an attractive and durable finished wall ideally suited for most commercial and industrial buildings. The embossed G-90 steel exterior panels are coated in 70% fluoropolymer finish to provide long term, low maintenance performance. Interior panels are planked design 26 gauge steel, factory coated with a white polyester finish. USDA approved finishes available. Exterior color options include:

Polar White -USDA Approved



Sandstone



Aegean Blue



Forest Green*



Desert Beige



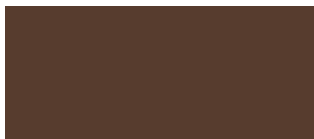
Regal Gray



Brick Red*



Sculpture Bronze*



ThermalClad exterior finishes meet Kynar 500 and Hylar 5000 specifications.

Kynar 500® is a registered trademark of Arkema.

Hylar 5000® is a registered trademark of Solvay Solexis.

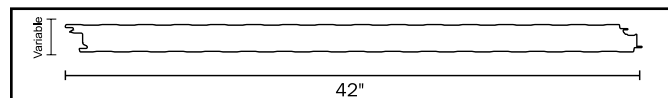
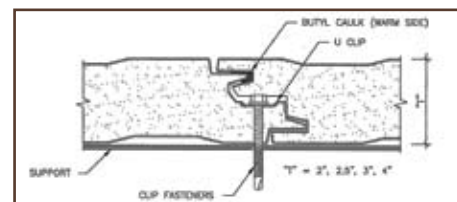
*Sculpture Bronze, Brick Red and Forest Green are not recommended for exterior color on cooler and freezer buildings.

Note: Tests and approvals include FM 4880 and FM 4881, Dade County Air and Water infiltration tests AAMA 501, ASTM E 283 and E 331.



FEATURES

- Fastener head and clip concealed in side joint
- Offset double tongue-and-groove side joint
- Lengths from 8'-40' available
- R-values to 34.9 available



Note: All panels formed from light gauge metal may exhibit waviness, also known as "Oil Canning," commonly occurring in, but not restricted to, flat portions of a panel. This inherent characteristic is not a defect of material or manufacturing and is not cause for rejection.

Insulation Effectiveness

| Panel Insulation Thickness | Operating Temperature | Thermal Conductivity (K-Factor) | Heat Transfer Coefficient (U-Value) | Thermal Resistance (R-Value) |
|----------------------------|-----------------------|---------------------------------|-------------------------------------|------------------------------|
| 2" | +40° F | .1146 | .0573 | 17.45 |
| 2.5" | +40° F | .1146 | .0459 | 21.81 |
| 3" | +40° F | .1146 | .0382 | 26.18 |
| 4" | +40° F | .1146 | .0287 | 34.9 |



2044 Revised 5/09

Varco Pruden Buildings, 3200 Players Club Circle, Memphis, TN 38125

©2009 BlueScope Buildings North America, Inc. All rights reserved.

Varco Pruden Buildings® is a division of BlueScope Buildings North America, Inc.

Find your independent Authorized VP Builder at www.vp.com

Varco Pruden meets IBC manufacturing; is a member of the USGBC and has Energy Star rated products. Many of our processes are certified by Canadian A-660 and approved by Factory Mutual.



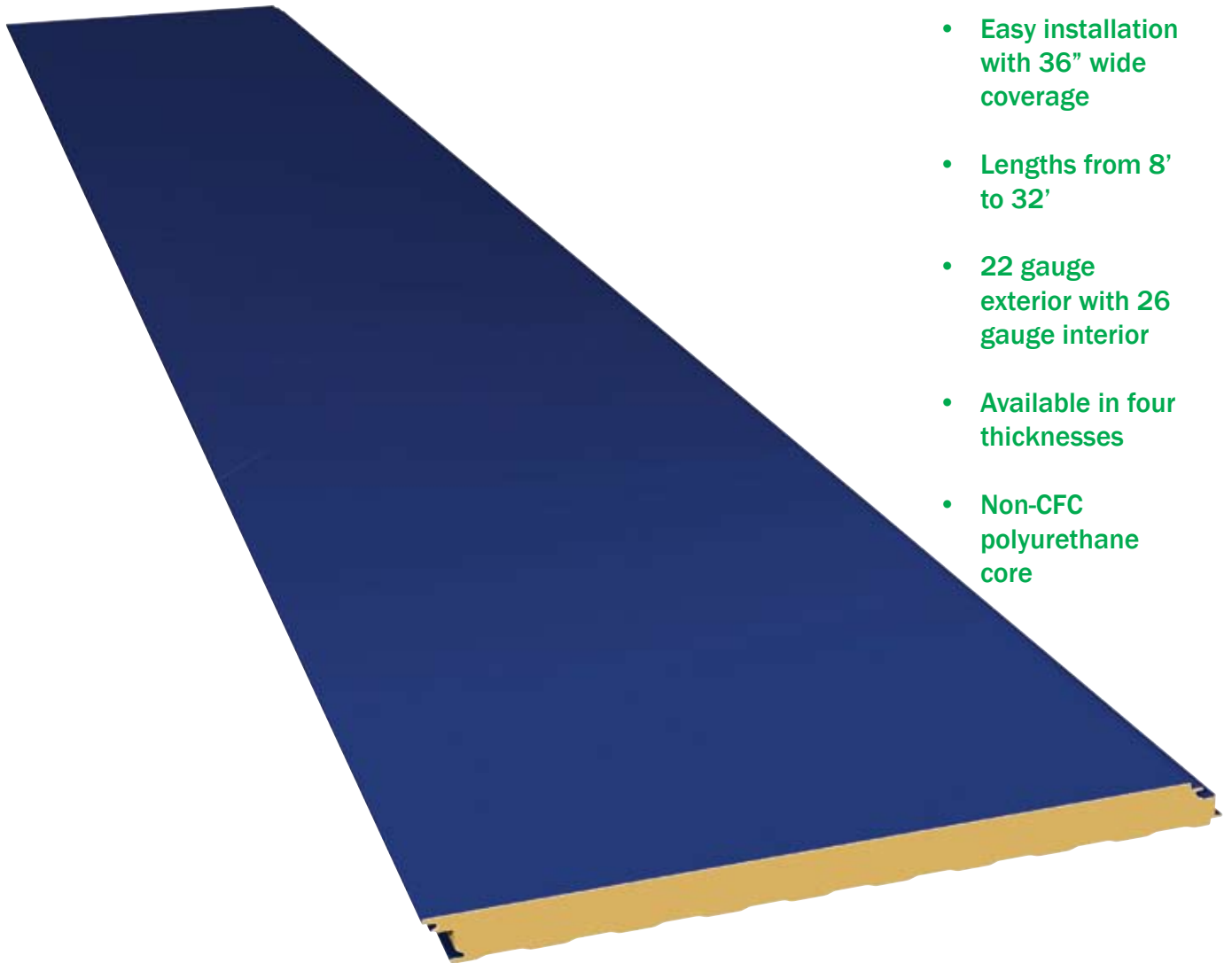
VP WALL SYSTEMS

STYLE

THERMALCLAD ARCHITECTURAL PANEL

FEATURES

HIGH PERFORMANCE, FLAT PROFILE INSULATED
PANEL, IDEAL FOR ARCHITECTURAL PROJECTS
REQUIRING THERMAL PROTECTION



- Easy installation with 36" wide coverage
- Lengths from 8' to 32'
- 22 gauge exterior with 26 gauge interior
- Available in four thicknesses
- Non-CFC polyurethane core

VP's ThermalClad Architectural panel is made for applications requiring flat profile insulated panels with concealed fasteners.



BUILD SMART BUILD GREEN WITH VP
RECYCLED STEEL COOL PAINTS ENERGY SAVING INSULATION



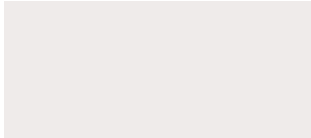
VP BUILDINGS' THERMALCLAD FLAT INSULATED WALL PANELS USE CONCEALED FASTENERS TO PROVIDE A SMOOTH ARCHITECTURAL PROFILE

THERMALCLAD ARCHITECTURAL PANEL

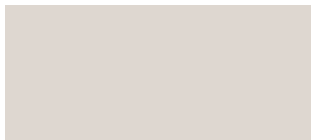
VP's Architectural wall panels are designed for high profile projects that require a flush exterior wall finish. This panel is 36" wide and available in four thicknesses, each with an insulated core made from foamed in-place, blister free, non-CFC polyurethane. Maximum panel length is 32'-0".

The exterior panels are made from extra heavy-duty 22 gauge, G-90 steel, coated with a 70% PVDF fluoropolymer finish. Interior panels are planked style 26 gauge steel, factory coated with a white polyester finish. USDA approved finishes available. Exterior color options include:

Polar White -USDA Approved



Sandstone



Aegean Blue



Forest Green*



Desert Beige



Regal Gray



Brick Red*



Sculpture Bronze*



ThermalClad exterior finishes meet Kynar 500 and Hylar 5000 specifications.

Kynar 500® is a registered trademark of Arkema.

Hylar 5000® is a registered trademark of Solvay Solexis.

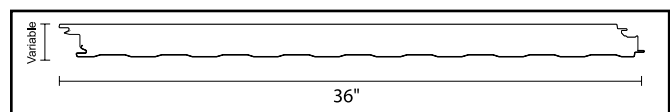
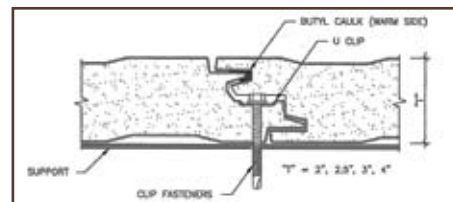
*Sculpture Bronze, Brick Red and Forest Green are not recommended for exterior color on cooler and freezer buildings.

Note: Tests and approvals include FM 4880 and FM 4881, Dade County Air and Water infiltration tests AAMA 501, ASTM E 283 and E 331.



FEATURES

- Offset double tongue-and-groove side joint
- Lengths from 8'-32' and 36" coverage
- Fastener head and clip concealed in side joint
- R-values up to R-34.9 available



Note: All panels formed from light gauge metal may exhibit waviness, also known as "Oil Canning," commonly occurring in, but not restricted to, flat portions of a panel. This inherent characteristic is not a defect of material or manufacturing and is not cause for rejection.

Insulation Effectiveness

| Panel Insulation Thickness | Operating Temperature | Thermal Conductivity (K-Factor) | Heat Transfer Coefficient (U-Value) | Thermal Resistance (R-Value) |
|----------------------------|-----------------------|---------------------------------|-------------------------------------|------------------------------|
| 2" | +40° F | .1146 | .0573 | 17.45 |
| 2.5" | +40° F | .1146 | .0459 | 21.81 |
| 3" | +40° F | .1146 | .0382 | 26.18 |
| 4" | +40° F | .1146 | .0287 | 34.9 |



2045 Revised 5/09

Varco Pruden Buildings, 3200 Players Club Circle, Memphis, TN 38125

©2009 BlueScope Buildings North America, Inc. All rights reserved.

Varco Pruden Buildings® is a division of BlueScope Buildings North America, Inc.

Find your independent Authorized VP Builder at www.vp.com

Varco Pruden meets IBC manufacturing; is a member of the USGBC and has Energy Star rated products. Many of our processes are certified by Canadian A-660 and approved by Factory Mutual.



VP WALL SYSTEMS

STYLE

THERMALCLAD REVEAL PANEL

FEATURES

STURDY, INSULATED SANDWICH PANEL IDEAL
FOR MOST COMMERCIAL & INDUSTRIAL
APPLICATIONS



- Embossed facing for architectural appeal
- Available in 42" panel width
- Non-CFC Polyurethane Core
- Offset tongue-and-groove joints at sidelap provide positive fastening
- Available in four thicknesses

VP's Reveal insulated panel combines great design with thermal performance. Ideal for dry goods storage and other controlled environments where temperature control and insulation values are critical.



BUILD SMART BUILD GREEN WITH VP
RECYCLED STEEL COOL PAINTS ENERGY SAVING INSULATION

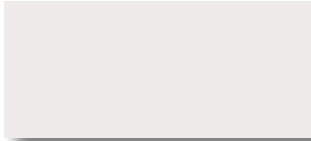


THERMALCLAD PANELS ARE IDEAL FOR MOST COMMERCIAL AND INDUSTRIAL PROJECTS AS WELL AS COLD STORAGE FACILITIES.

THERMALCLAD REVEAL INSULATED WALL PANEL

VP's Reveal Panels feature sturdy 26 gauge steel panels on both exterior and interior faces. The exterior panel is factory-formed with bold vertical lines to present an attractive and durable finished wall, ideally suited for most commercial and industrial buildings. The embossed G-90 steel exterior panels are coated in 70% fluoropolymer finish to provide long term, low maintenance performance. Interior panels are planked design 26 gauge steel, factory coated with a white polyester finish. USDA approved finishes available. Exterior color options include:

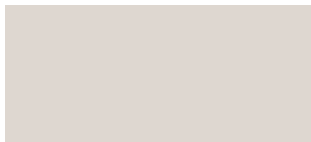
Polar White -USDA Approved



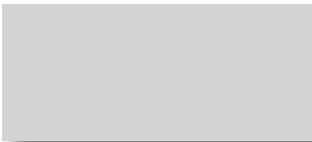
Desert Beige



Sandstone



Regal Gray



Aegean Blue



Brick Red*



Forest Green*



Sculpture Bronze*



ThermalClad exterior finishes meet Kynar 500 and Hylar 5000 specifications. Kynar 500® is a registered trademark of Arkema.

Hylar 5000® is a registered trademark of Solvay Solexis.

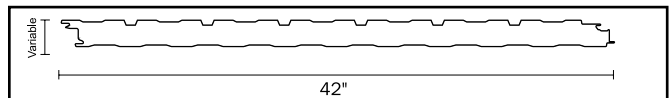
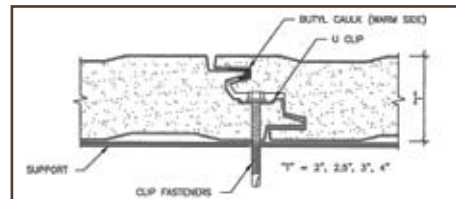
*Sculpture Bronze, Brick Red and Forest Green are not recommended for exterior color on cooler and freezer buildings.

Note: Tests and approvals include FM 4880 and FM 4881, Dade County Air and Water infiltration tests AAMA 501, ASTM E 283 and E 331.



FEATURES

- Offset double tongue-and-groove side joint
- R-values up to R-34.9 available
- Clips and fasteners concealed in side joint
- Standard lengths from 8'-40'



Note: All panels formed from light gauge metal may exhibit waviness, also known as "Oil Canning," commonly occurring in, but not restricted to, flat portions of a panel. This inherent characteristic is not a defect of material or manufacturing and is not cause for rejection.

Insulation Effectiveness

| Panel Insulation Thickness | Operating Temperature | Thermal Conductivity (K-Factor) | Heat Transfer Coefficient (U-Value) | Thermal Resistance (R-Value) |
|----------------------------|-----------------------|---------------------------------|-------------------------------------|------------------------------|
| 2" | +40° F | .1146 | .0573 | 17.45 |
| 2.5" | +40° F | .1146 | .0459 | 21.81 |
| 3" | +40° F | .1146 | .0382 | 26.18 |
| 4" | +40° F | .1146 | .0287 | 34.9 |



2042 Revised 5/09

Varco Pruden Buildings, 3200 Players Club Circle, Memphis, TN 38125

©2009 BlueScope Buildings North America, Inc. All rights reserved.

Varco Pruden Buildings® is a division of BlueScope Buildings North America, Inc.

Find your independent Authorized VP Builder at www.vp.com

Varco Pruden meets IBC manufacturing; is a member of the USGBC and has Energy Star rated products. Many of our processes are certified by Canadian A-660 and approved by Factory Mutual.



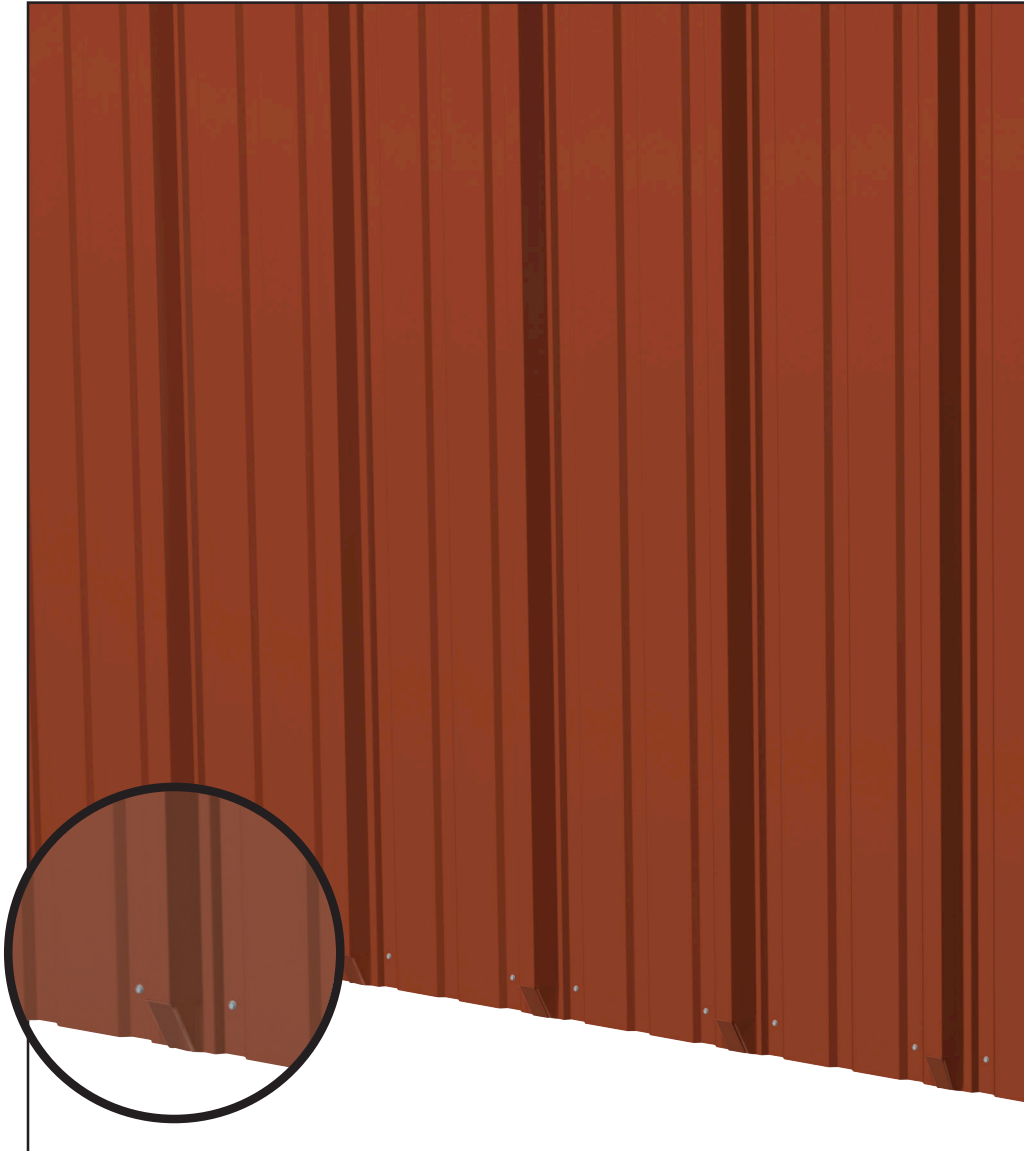
VP WALL SYSTEMS

STYLE

CRIMPED BASE PANEL RIB

FEATURES

REDUCE INSTALLATION COSTS WHILE ADDING PROTECTION AND AN AESTHETIC APPEARANCE FOR BASE WALL TRIM.



- Avoids expense of material and installation of notched metal and/or rubber closures
- Eliminates the need for painted base trim
- Avoids dirt retention and potential nesting of insects and varmints at sill flashing
- Eliminate snow and ice build up at sills

Exclusively from VP, this panel offers an attractive and cost effective base treatment for buildings, with additional benefits.

PANEL RIB WITH CRIMPED BASE OFFERS AN ECONOMICAL ENDWALL SOLUTION

CRIMPED BASE PANEL RIB WALL

VP's exclusive Crimped Base Panel Rib wall panel is designed to save time and headaches. Crimped Base Panel Rib saves installation time and cost of material, because it eliminates the need for notched metal or rubber closures. Using this panel also saves the building owner the need for painted base trim. And once constructed, the building doesn't want any uninvited guests. Crimped Base Panel Rib affords no openings for birds, and varmints to nest.

These 36" wide panels with 1 1/4"-high ribs also eliminate snow and ice dam buildup at the sills.

Crimped Base Panel Rib wall panel offers a crimped base at the concrete foundation and a notch at the eave. This results in a better weathertight seal at the base and eave and further savings through fewer trim and closure materials. The panels are attached with self-drilling, color-matched fasteners. Wall panels are standard in 26 gauge or 24 gauge steel, with a 22 gauge option. It is available in lengths up to 41'.

Panel Rib can effectively utilize up to 6" of blanket insulation as well as up to 2-1/2" of rigid board insulation. Therefore, your VP builder can assist you in selecting the optimal insulation approach, considering up-front costs and long term energy savings.

All gauges of Panel Rib are available in thirteen (13) standard colors with KXL finishes or four (4) color choices with SP finishes as well as a variety of custom colors.

The KXL paint system is a PVDF finish applied to the zinc or zinc aluminum coated steel to give a long-life color that resists fading and chalking. KXL is a 1 mil nom. PVDF finish with 70% Kynar® 500 or Hylar® 5000 standard. SP paint finish is a 1 mil. thermoset siliconized polyester coating system.

VP meets the highest standards and certifications in the industry, including AISC and Miami-Dade County, Florida Product Approved:

NOA #02-0417.01 expires 07/01/2007

For information about this or any other VP product or service, contact your local authorized VP Builder.



FEATURES

- Aesthetically pleasing
- Provides added protection from unwanted birds or pests
- Limits ice and snow buildup
- Reduces installation costs by eliminating the need for notched panel closures
- Eliminates base trim
- Available in standard VP Panel Rib colors

NOTE: ALL PANELS FORMED FROM LIGHT GAUGE METAL MAY EXHIBIT WAVINESS, ALSO KNOWN AS "OIL CANNING," COMMONLY OCCURRING IN, BUT NOT RESTRICTED TO, FLAT PORTIONS OF A PANEL. THIS INHERENT CHARACTERISTIC IS NOT A DEFECT OF MATERIAL OR MANUFACTURING AND IS NOT CAUSE FOR REJECTION.



The Ultimate Building Solution
VP Buildings
3200 Players Club Circle
Memphis, TN 38125
1-800-238-3246 • www.vp.com
2048 Revised 1/06



VP WALL PANELS

STYLE

PANEL RIB WALL

FEATURES

AN ATTRACTIVE, HIGH-QUALITY, LOW
MAINTENANCE WALL PANEL FOR TIGHT BUDGETS



- Fast installation with self-drilling, color-matched fasteners
- Lengths up to 41' which can provide a continuous panel from eave to foundation
- Thirteen standard colors

Panel Rib wall is our most popular wall panel. It has proven durability and provides a classic look in a wide variety of colors.



VP'S PANEL RIB IS AN ATTRACTIVE, ECONOMICAL METAL WALL PANEL OPTION

PANEL RIB WALL

Panel Rib is our most economical wall system. In fact, this wall system is more economical than wood, concrete or masonry alternatives.

Panel Rib wall panels come standard in 26 gauge steel, with 24 gauge or 22 gauge options. The panel is 36" wide with 1-1/4" high ribs. It is available in lengths up to 41' which can provide a continuous panel from foundation to eave. This can eliminate the need for end laps and assures you of wall integrity and weather tightness.

Panel Rib also offers a crimped base and notched eaves for a better weathertight seal and reduced costs with fewer trim and closure materials required. The panels are attached with self drilling, color-matched fasteners.

Panel Rib can effectively utilize blanket insulation as well as up to 2-1/2" of rigid board insulation. Your VP builder can assist you in selecting the optimal insulation approach, considering up-front costs and long term energy savings.

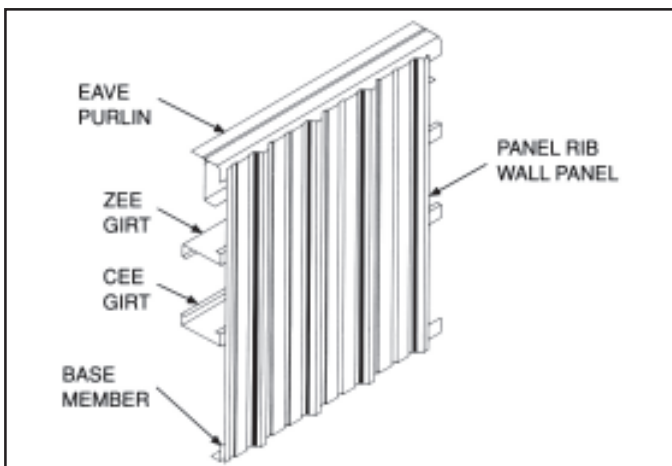
All gauges of Panel Rib are available in thirteen (13) standard colors with KXL finishes or four (4) color choices with SP finishes as well as a variety of custom colors.

The KXL paint system is a PVDF finish applied to the zinc or zinc aluminum coated steel to give a long-life color that resists fading and chalking. KXL is a 1 mil nom. PVDF finish with 70% Kynar® 500 or Hylar® 5000 standard. SP paint finish is a 1 mil. thermoset siliconized polyester coating system.

VP meets the highest standards and certifications in the industry, including AISI and Miami-Dade County, Florida Product Approved:

NOA #02-0417.01 expires 07/01/2007

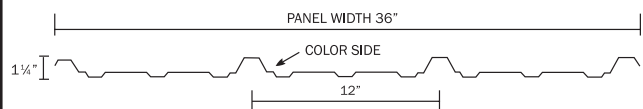
For information about this or any other VP product or service, contact your local authorized VP Builder.



FEATURES

- 1-1/4" high ribs
- Fast installation
- 26 gauge painted Galvalume® steel standard with 24 and 22 gauge options
- Economical
- 36" coverage with lengths up to 41 ft.

PANEL RIB WALL



NOTE: ALL PANELS FORMED FROM LIGHT GAUGE METAL MAY EXHIBIT WAVINESS, ALSO KNOWN AS "OIL CANNING," COMMONLY OCCURRING IN, BUT NOT RESTRICTED TO, FLAT PORTIONS OF A PANEL. THIS INHERENT CHARACTERISTIC IS NOT A DEFECT OF MATERIAL OR MANUFACTURING AND IS NOT CAUSE FOR REJECTION.



The Ultimate Building Solution
VP Buildings
3200 Players Club Circle
Memphis, TN 38125
1-800-238-3246 • vp.com
2057 Revised 12/05



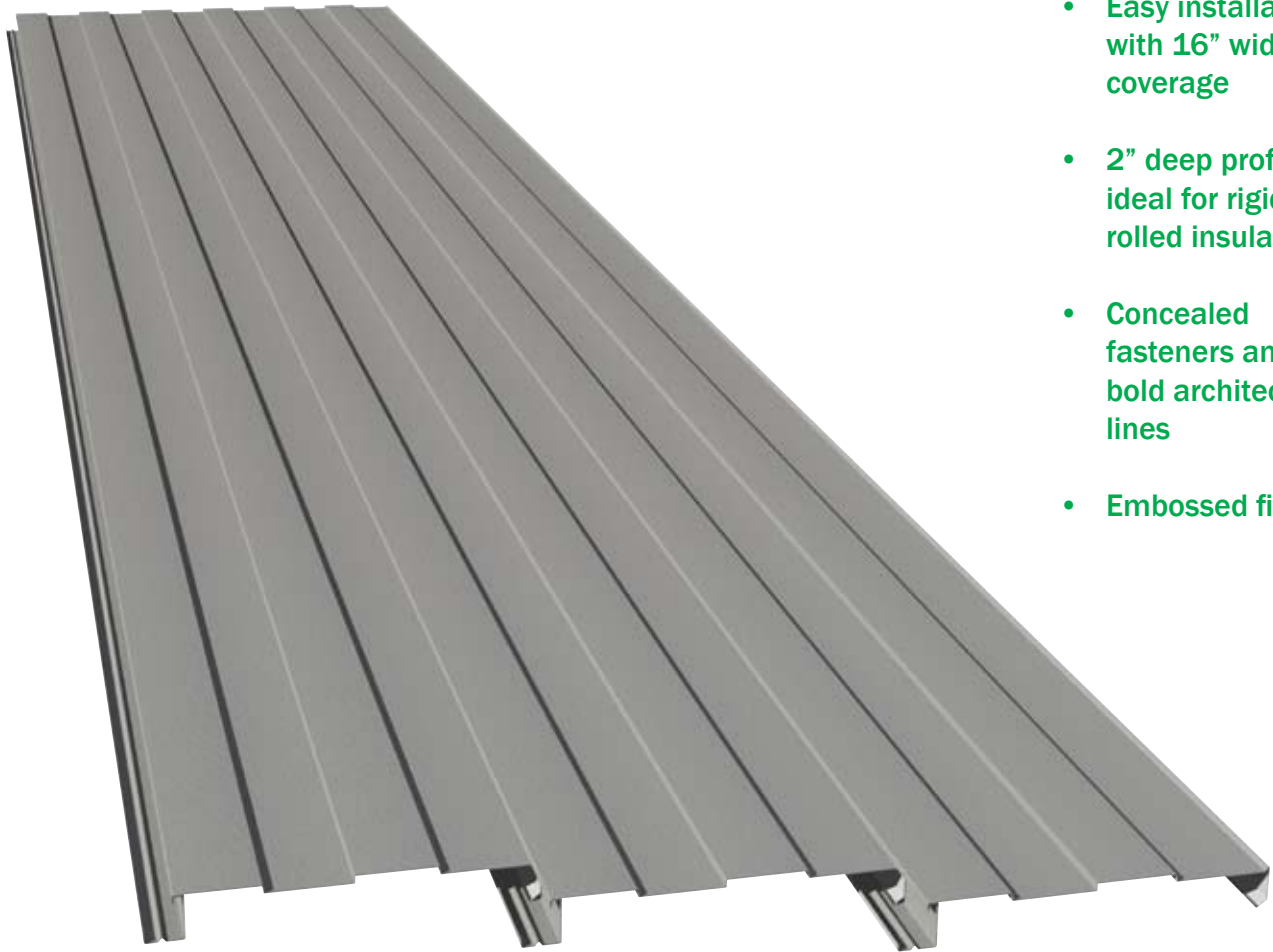
VP WALL SYSTEMS

STYLE

TECH FOUR WALL PANEL

FEATURES

ATTRACTIVE ARCHITECTURAL METAL WALL
SYSTEM COMBINES SMART DESIGN WITH ENERGY
EFFICIENT PERFORMANCE



- Easy installation with 16" wide coverage
- 2" deep profile ideal for rigid or rolled insulation
- Concealed fasteners and bold architectural lines
- Embossed finish

Tech Four wall panel is the smart choice for commercial and industrial projects — can be easily insulated with a wide variety of insulation systems: batt, blanket, or rigid board.



BUILD SMART BUILD GREEN WITH VP
RECYCLED STEEL COOL PAINTS ENERGY SAVING INSULATION



AN ATTRACTIVE WALL PANEL WITH BOLD ARCHITECTURAL LINES AND CONCEALED FASTENERS

TECH FOUR WALL PANEL

A unique architectural wall system that is easy to install featuring concealed fasteners and an attractive, embossed finish.

Tech Four offers 16" coverage with 1/4" high, 4" wide alternating fluted profile. Available in lengths of up to 40', Tech Four can provide continuous coverage from foundation to eave – eliminating the need for end laps and assuring superior weather tightness. Manufactured in sturdy 24 gauge steel for added strength and erectability.

Tech Four's 2" deep overall profile easily adapts to a variety of insulation options (including batt, blanket or rigid board) creating a more energy-efficient building envelope.

Available in VP's long-life KXL finish with 70% PVDF (Kynar 500 or Hylar 5000). Color options shown below.

Tech Four's interlocking fastener locations give the panel a concealed profile with bold architectural lines. A complete trim package including gutter and rake trim, corners and base trim are available to provide an attractive finished appearance.

Cool Egyptian White



Cool Granite Gray



Cool Straw Gold



Cool Cobalt Blue



Cool Leaf Green

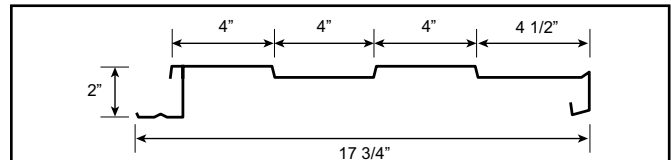


Tech Four finishes meet Kynar 500 and Hylar 5000 specifications.
KYNAR® is a registered trademark of Atochem North America, Inc.
Hylar 5000® is a registered trademark of Solvay Solexis.
Galvalume® is a registered trademark of BIEC International, Inc.



FEATURES

- 16" coverage
- 24 gauge painted Galvalume® steel
- Fast installation
- Lengths up to 40' which can provide a continuous panel from eave to foundation.
- Economical



Note: All panels formed from light gauge metal may exhibit waviness, also known as "Oil Canning," commonly occurring in, but not restricted to, flat portions of a panel. This inherent characteristic is not a defect of material or manufacturing and is not cause for rejection.



2068 Issued 9/09
Varco Pruden Buildings, 3200 Players Club Circle, Memphis, TN 38125
©2009 BlueScope Buildings North America, Inc. All rights reserved.
Varco Pruden Buildings® is a division of BlueScope Buildings North America, Inc.
Find your independent Authorized VP Builder at www.vp.com



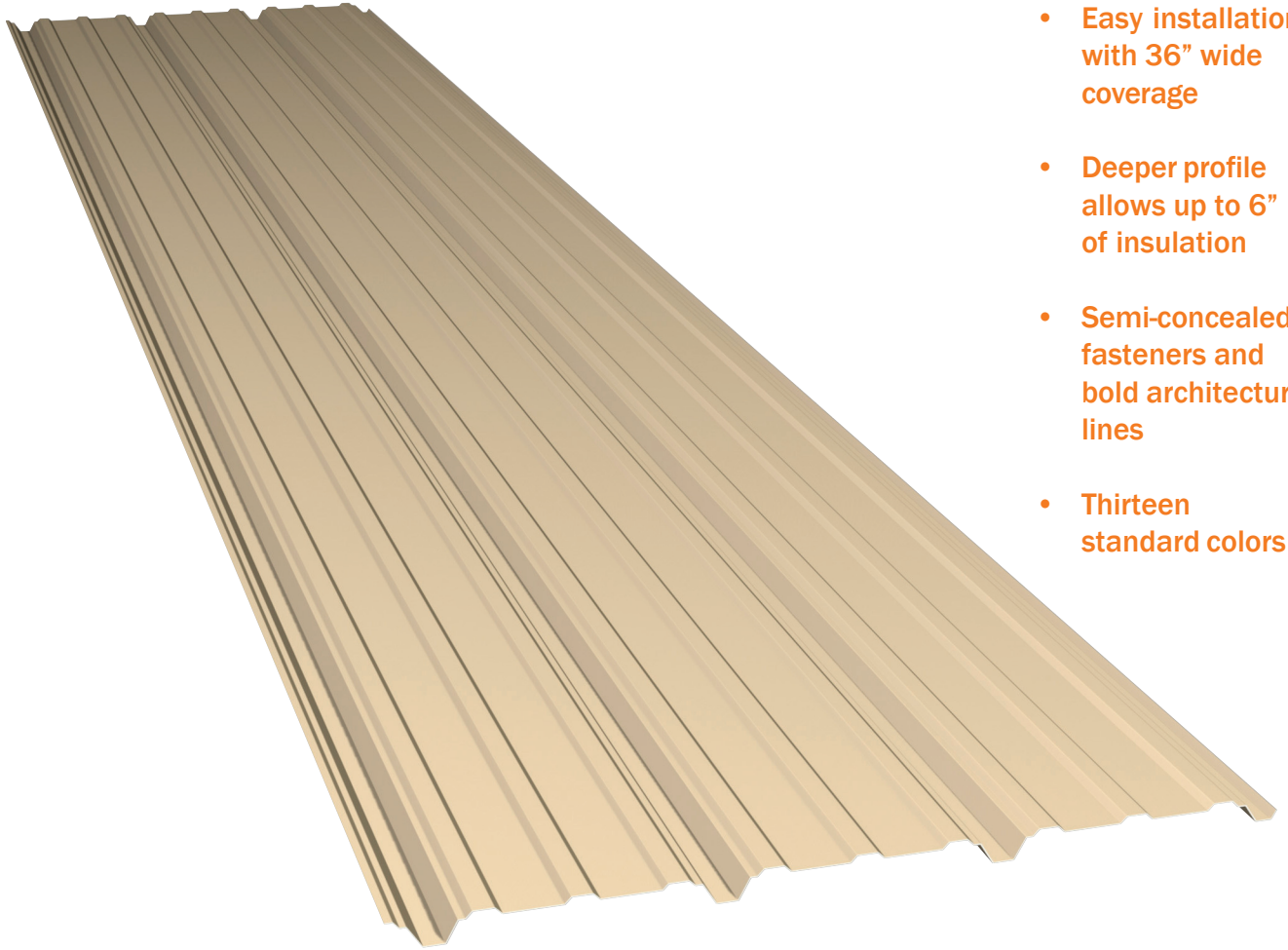
VP WALL PANELS

STYLE

RPR WALL PANEL

FEATURES

AN ECONOMICAL METAL WALL SYSTEM WITH
HIGHER THERMAL EFFICIENCY CAPABILITIES



- Easy installation with 36" wide coverage
- Deeper profile allows up to 6" of insulation
- Semi-concealed fasteners and bold architectural lines
- Thirteen standard colors

RPR wall panel is the smart choice for commercial and industrial projects — easy to install and allows up to 6 inches of faced blanket insulation.



AN ATTRACTIVE WALL PANEL WITH BOLD ARCHITECTURAL LINES AND SHADOW- RECESSED FASTENERS

RPR WALL PANEL

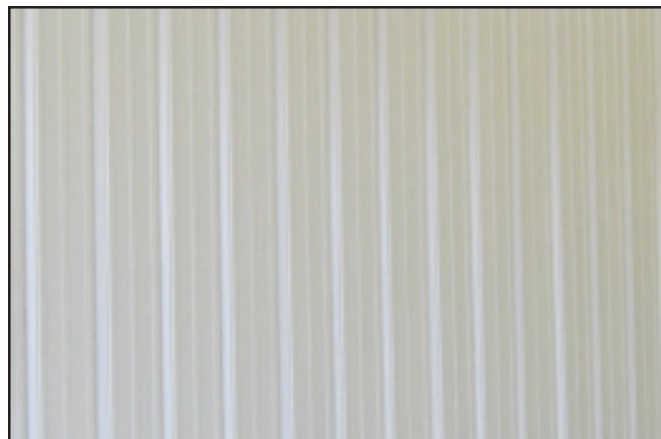
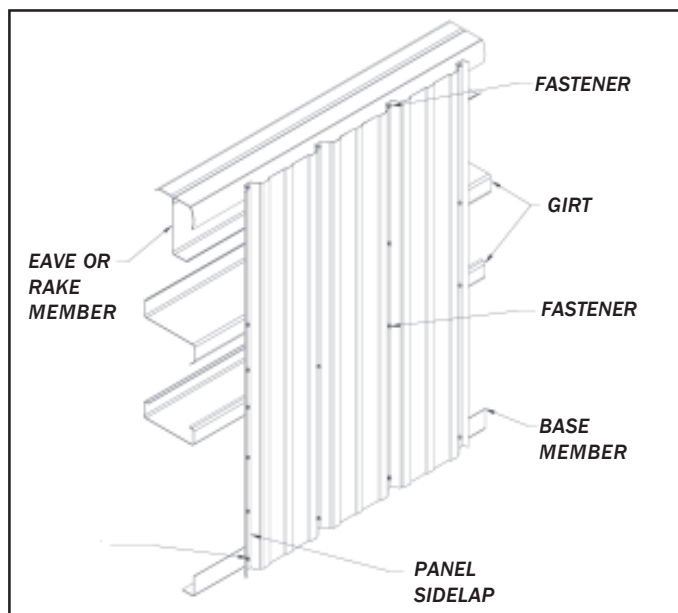
RPR panel is an attractive, high quality, low maintenance panel based on a "reverse rolled" version of VP's standard Panel Rib design.

RPR is a 36" wide panel with a 1-1/4" rib profile. Available in lengths of up to 41', RPR can provide continuous coverage from foundation to eave eliminating the need for end laps and assuring superior weather tightness. Panels come standard in sturdy 26 gauge steel or in 24 and 22 gauge options.

RPR panel's deeper profile accommodate up to 6" of faced blanket insulation or up to 2-1/2" of rigid board, creating a more thermal efficient building envelope.

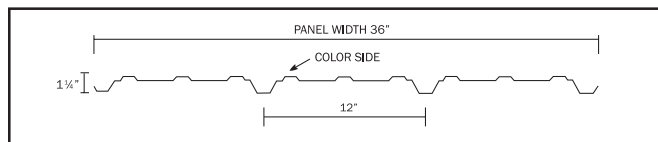
Available in either VP's long-life KXL finish with 70% PVDF (Kynar 500 or Hylar 5000) or economical SP, siliconized polyester finish, RPR panel offers a choice of 13 attractive colors.

RPR's recessed fastener locations give the panel a semi-concealed profile with bold architectural lines. RPR comes with a complete trim package including gutter and rake trim, corners and base trim to provide an attractive finished appearance. VP also offers a full line of high quality accessories including doors and windows designed to give years of trouble-free service.



FEATURES

- 36" coverage
- 26 or 24 gauge painted Galvalume® steel
- Fast installation
- Lengths up to 41' which can provide a continuous panel from eave to foundation.
- Economical



NOTE: ALL PANELS FORMED FROM LIGHT GAUGE METAL MAY EXHIBIT WAVINESS, ALSO KNOWN AS "OIL CANNING," COMMONLY OCCURRING IN, BUT NOT RESTRICTED TO, FLAT PORTIONS OF A PANEL. THIS INHERENT CHARACTERISTIC IS NOT A DEFECT OF MATERIAL OR MANUFACTURING AND IS NOT CAUSE FOR REJECTION.



The Ultimate Building Solution
VP Buildings
3200 Players Club Circle
Memphis, TN 38125
1-800-238-3246 • vp.com
2059 Issued 11/05



QUALITY CERTIFICATION
METAL BUILDINGS

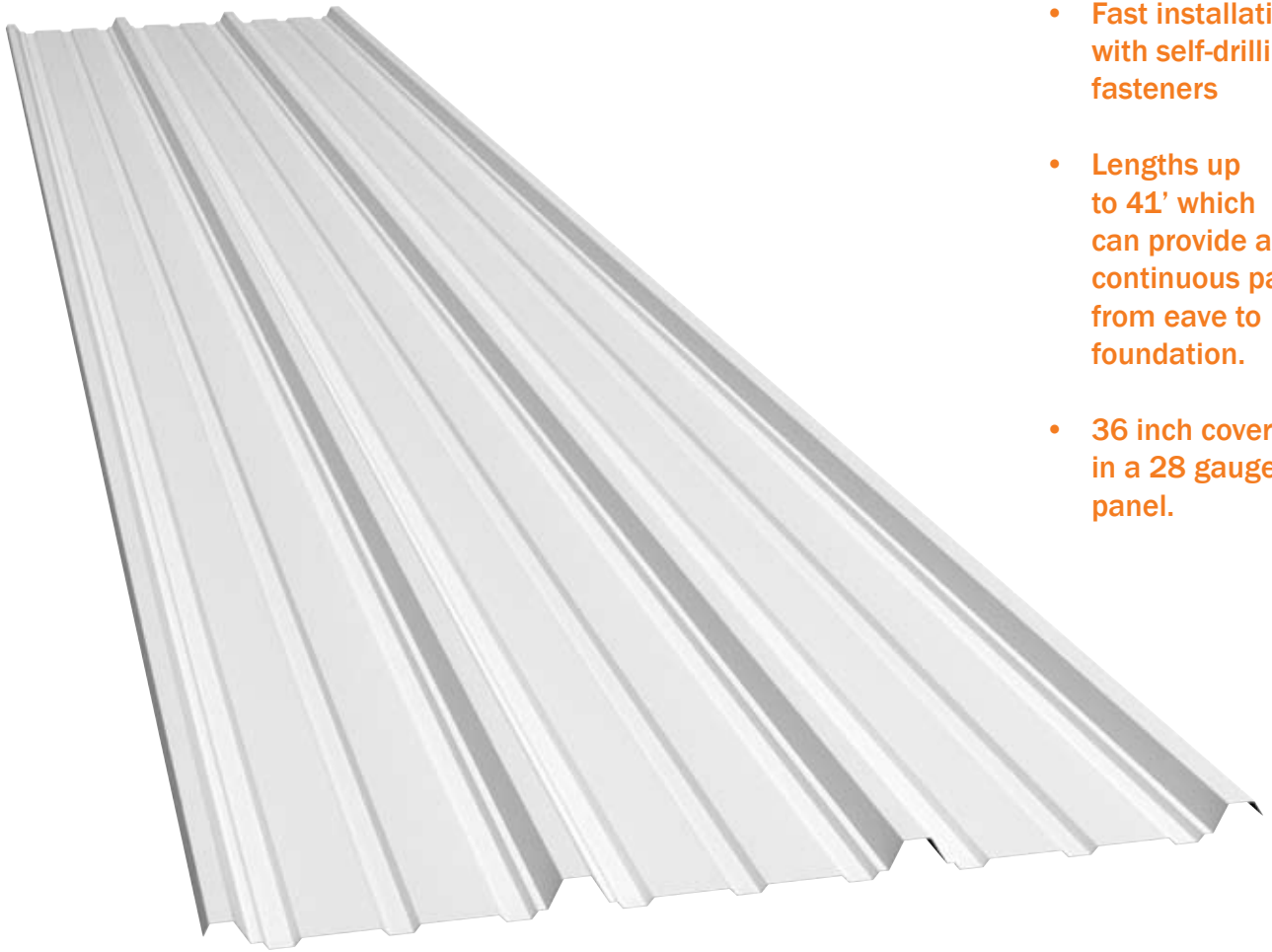
VP WALL SYSTEMS

STYLE

LPR-36 LINER PANEL

FEATURES

HIGH QUALITY, LOW MAINTENANCE INTERIOR
LINER PANELS FOR TIGHT BUDGETS



- Fast installation with self-drilling fasteners
- Lengths up to 41' which can provide a continuous panel from eave to foundation.
- 36 inch coverage in a 28 gauge panel.

Economical, interior liner panel featuring lightweight 28 gauge zinc coated steel with a smooth, white finish.



LPR-36 PANELS OFFER YOU ENHANCED INTERIOR WALL INTEGRITY AND QUICKER INSTALLATION

LPR-36 LINER PANEL

LPR-36 liner panel is our most economical interior wall system. In fact, this wall system is more economical than wood or masonry alternatives.

LPR-36 panels are 28 gauge steel and measure 36" wide with 1-3/16" high ribs. The panel is available in lengths up to 41'. This can eliminate the need for endlaps and assures enhanced wall integrity.

The panels are attached with self-drilling fasteners.

In addition, the panel's wide module and long length availability minimizes sidelaps and endlaps which increases installation speed.

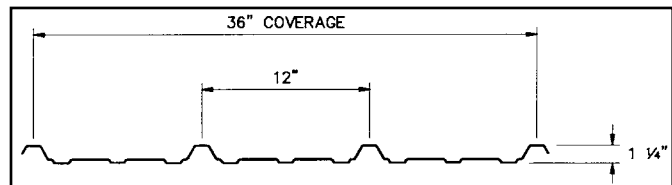
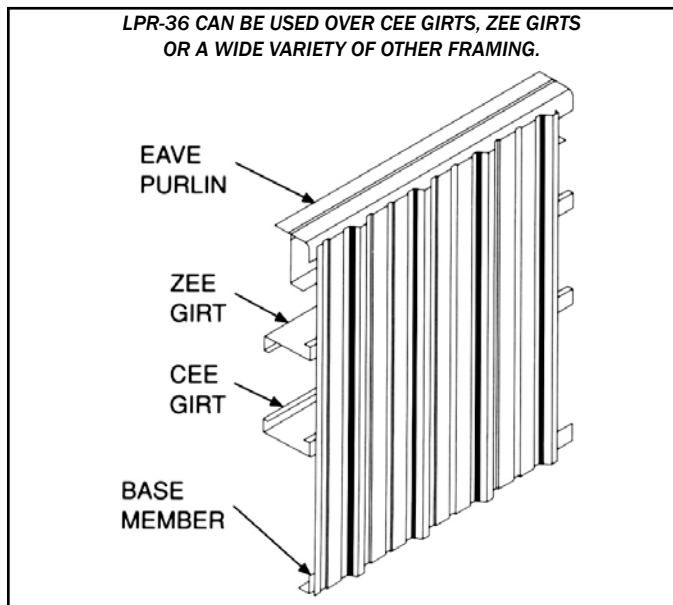
Liner Panel can accommodate up to 6" of fiberglass blanket insulation for high levels of energy efficiency.

Liner Panel is an ASTM A653 Grade 33 steel with a zinc coating. The panel is painted with a white polyester finish on one side and a gray primer coating on the second side.



FEATURES

- 36" coverage
- 28 gauge
- Lengths up to 41'
- White polyester finish on the front; gray primer on the back
- Fast installation



The Ultimate Building Solution
Varco Pruden Buildings, Inc.
3200 Players Club Circle
Memphis, TN 38125
1-800-238-3246 • www.vp.com
2093 Revised 2/00



QUALITY CERTIFICATION
METAL BUILDINGS

VP WALL SYSTEMS

STYLE

VEE RIB PANEL

FEATURES

AN ECONOMICAL PANEL WITH DISTINCT SCULPTURED APPEARANCE AND SEMI-CONCEALED FASTENERS.



- Surface is embossed for aesthetics
- Fast installation with semi-concealed, self-drilling color matched fasteners
- Lengths up to 41' which can provide a continuous panel from eave to foundation

Vee Rib panels have recessed V-grooves for a sculptured appearance. Fasteners are placed at the bottom of the “V” and the three foot wide panels means total fastener count is held to a minimum for an enhanced appearance.



THE SCULPTURED LOOK OF VEE RIB CAN ADD VISUAL INTEREST TO ANY BUILDING

VEE RIB WALL PANEL

Vee Rib is an economical wall system with a distinct sculptured look. This wall system can provide a more economical approach than concrete, masonry or even wood alternatives.

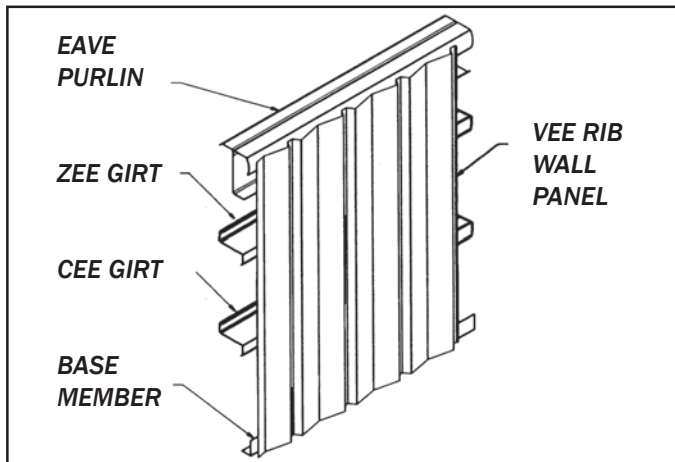
Vee Rib wall panels are standard 26 gauge Galvalume® steel with 24 or 22 gauge options. The panel is 36" wide with a V-groove pattern creating 1-1/4" reveals. It is available in lengths up to 41' which can provide a continuous panel from foundation to eave. This can eliminate the need for endlaps and assures you of wall integrity and weathertightness.

Vee Rib also comes with special base trim for the foundation to assure a weathertight seal. Vee Rib panels are attached with self-drilling, color matched fasteners that are semi-concealed in the bottom of the V-groove. The panel's surface is embossed for increased aesthetics and to reduce glare.

Vee Rib can effectively utilize up to 6" of blank insulation as well as up to 2-1/2" of rigid board insulation. Therefore, your VP Builder can assist you in selecting the optimal insulation approach, considering up-front costs and long term energy savings.

All gauges of Vee Rib are available with standard KXL finish in standard colors and SP finishes. The KXL paint system is a PVDF finish applied to the Galvalume® surface to give a long-life color that resists fading and chalking. KXL is a 1 mil nom. PVDF finish with 70% Kynar® 500 or Hylar® 5000 standard. SP paint finish is a 1 mil. thermoset siliconized polyester coating system.

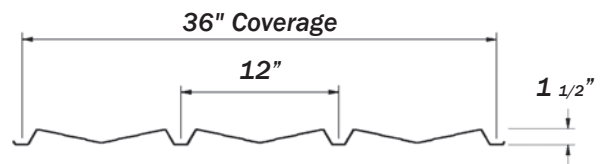
For information about this or any other VP product or service, contact your local authorized VP Builder.



FEATURES

- Fasteners hidden in reveals
- Sculptured appearance
- Lengths up to 41'-0"
- 36" Coverage
- Fast installation
- 1 1/4" deep reveals

VEE RIB CROSS SECTION



NOTE: ALL PANELS FORMED FROM LIGHT GAUGE METAL MAY EXHIBIT WAVINESS, ALSO KNOWN AS "OIL CANNING," COMMONLY OCCURRING IN, BUT NOT RESTRICTED TO, FLAT PORTIONS OF A PANEL. THIS INHERENT CHARACTERISTIC IS NOT A DEFECT OF MATERIAL OR MANUFACTURING AND IS NOT CAUSE FOR REJECTION.

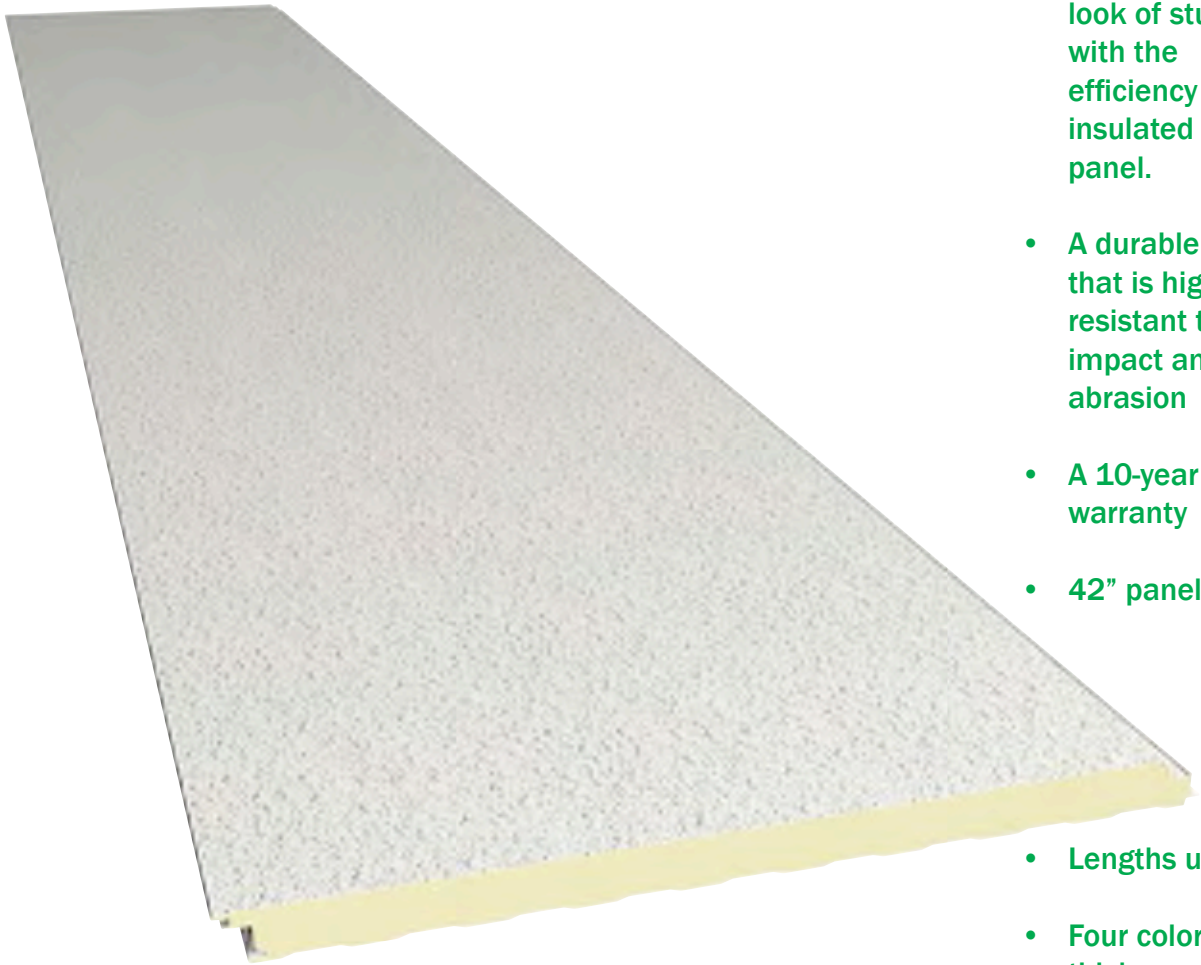


The Ultimate Building Solution
VP Buildings
3200 Players Club Circle
Memphis, TN 38125
1-800-238-3246 • vp.com
2058 Revised 11/05



VP WALL SYSTEMS

| STYLE | FEATURES |
|--------------------------------------|---|
| TUFF-WALL INSULATED PANEL | A 42 INCH WIDE, DOUBLE-WALLED FOAM INSULATED PANEL WITH AN ATTRACTIVE AND DURABLE TEXTURED FINISH |



- The masonry look of stucco with the efficiency of an insulated metal panel.
- A durable finish that is highly resistant to impact and abrasion
- A 10-year limited warranty
- 42" panel width
- Lengths up to 40'
- Four colors, four thicknesses

Tuff-Wall's unique design features a textured finish on top of double-walled, foam insulation that offers superior thermal performance.



BUILD SMART BUILD GREEN WITH VP
RECYCLED STEEL COOL PAINTS ENERGY SAVING INSULATION



AN ATTRACTIVE WALL PANEL WITH STUCCO APPEARANCE WITH OUTSTANDING THERMAL PERFORMANCE

TUFF-WALL™

VP's Tuff-Wall™ is an exceptionally attractive stucco-like insulated wall panel that provides a highly-desired look. The panel's textured surface has a hard aggregated fiber reinforced polymer coating created with the factory applied Tuff-Cote finish system. Tuff-Cote™ finish offers an extremely durable, impact and abrasion resistant coating that withstands severe weather conditions.

Unlike field-applied finishes that are vulnerable to damp or cold weather, Tuff-Wall™ panels can be erected in virtually any weather condition. As an added value, Tuff-Wall™ panels can function as the finished interior walls in many applications. Maximum panel length is 40'-0".

Exterior metal walls are a sturdy 26 gauge steel, surrounding an insulated core of foamed in-place, blister free, non-CFC polyurethane. Interior panels are 26 gauge steel, factory coated with a white polyester finish. USDA approved finishes available. Four exterior color options include:

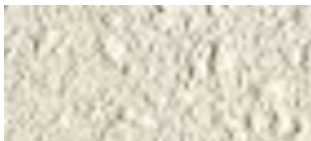
Stucco White



Medium Beige



Light Stone



Light Gray

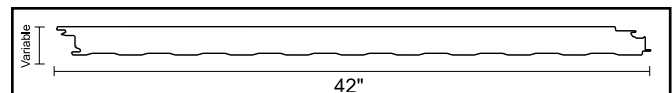
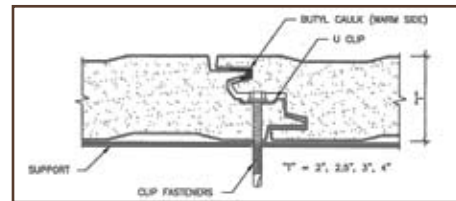


Note: Tests and approvals include FM 4880 and FM 4881, Dade County Air and Water infiltration tests AAMA 501, ASTM E 283 and E 331.



FEATURES

- The masonry look of stucco with the efficiency of an insulated metal panel.
- A 10-year limited warranty
- The field-tested and proven Tuff-Cote™ technology
- A durable finish that is highly resistant to impact and abrasion



Note: All panels formed from light gauge metal may exhibit waviness, also known as "Oil Canning," commonly occurring in, but not restricted to, flat portions of a panel. This inherent characteristic is not a defect of material or manufacturing and is not cause for rejection.

Insulation Effectiveness

| Panel Insulation Thickness | Operating Temperature | Thermal Conductivity (K-Factor) | Heat Transfer Coefficient (U-Value) | Thermal Resistance (R-Value) |
|----------------------------|-----------------------|---------------------------------|-------------------------------------|------------------------------|
| 2" | +40° F | .1146 | .0573 | 17.45 |
| 2.5" | +40° F | .1146 | .0459 | 21.81 |
| 3" | +40° F | .1146 | .0382 | 26.18 |
| 4" | +40° F | .1146 | .0287 | 34.9 |



2046 Revised 5/09
 Varco Pruden Buildings, 3200 Players Club Circle, Memphis, TN 38125
 ©2009 BlueScope Buildings North America, Inc. All rights reserved.
 Varco Pruden Buildings® is a division of BlueScope Buildings North America, Inc.
 Find your independent Authorized VP Builder at www.vp.com
 Varco Pruden meets IBC manufacturing; is a member of the USGBC and has Energy Star rated products. Many of our processes are certified by Canadian A-660 and approved by Factory Mutual.



VP WALL SYSTEMS

STYLE

IMPRESSACLAD

FEATURES

**SMOOTH OR EMBOSSED INTERLOCKING METAL
WALL PANEL SYSTEM**



- Easy installation with concealed fasteners
- Clip-less design
- Panels to 26' length
- 20 year warranty
- 6 standard colors (custom colors available)
- Works great as a Soffit panel also

ImpressaClad provides a smooth or embossed finish in a stackable, lightweight and easy-to-install metal wall panel system.



BUILD SMART BUILD GREEN WITH VP
RECYCLED STEEL COOL PAINTS ENERGY SAVING INSULATION



PRE-FINISHED PANELS ARE EASY TO ASSEMBLE AND CAN BE INSTALLED REGARDLESS OF CLIMATE OR WEATHER CONDITIONS

IMPRESSACLAD

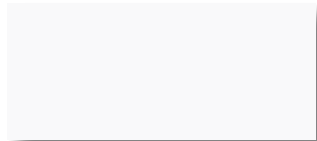
ImpressaClad will satisfy most local building ordinances that prohibit other metal wall panel applications. These panels are durable and provide protection from ultraviolet rays.

Each ImpressaClad panel is manufactured from 20-gauge galvanized steel. Panel width installed is 16". Both top and bottom of every panel has a 5/8" fold back. Formed ends allow the panel to nest end-to-end for stacking up a vertical wall, allowing for taller elevation applications. Installation of panels over a weatherproof membrane is recommended. Panel lengths range from 14" to 26'.

The panels are available in 6 unique colors. Kynar paint finishes are respected for their durability, resistance and color retention. The swatches shown are an approximation of actual paint colors. Variations may occur between sample materials and finished product. For actual paint color, ask for a painted metal chip.

ImpressaClad comes with a 20-year warranty for the panel and finish.

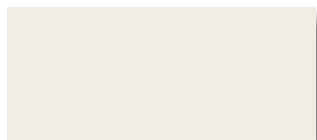
Linen White



Taupe



Sandstone



Ash



Khaki



Gray



FEATURES

- 16" width coverage; lengths up to 26'
- Durable, attractive finishes
- Concealed fastener installation
- Lightweight
- 6 unique colors
- Low-maintenance
- 24 and 20 ga. trims

| CHARACTERISTICS | TEST METHOD |
|-------------------------------|-------------|
| Adhesion | ASTM D2794 |
| Formability | ASTM D1737 |
| Color Retention | ASTM G26 |
| Structural | ASTM E1592 |
| Racking Shear | ASTM E72-80 |
| Water Soak | ASTM D870 |
| Salt Spray | ASTM B-117 |
| Weathering | ASTM G23 |
| Missile Test | ASTM E1886 |
| Cyclic Pressure | ASTM E1996 |
| Dade County, Florida Approved | |

Note: All panels formed from light gauge metal may exhibit waviness, also known as "Oil Canning," commonly occurring in, but not restricted to, flat portions of a panel. This inherent characteristic is not a defect of material and is not cause for rejection.

Note: ImpressaClad finishes meet Kynar 500 specifications. KYNAR® is a registered trademark of Atochem North America, Inc.



The Ultimate Building Solution
VP Buildings
3200 Players Club Circle
Memphis, TN 38125
1-800-238-3246 • vp.com
2096 Issued 1/08



VP WALL SYSTEMS

STYLE

TEXTURECLAD

FEATURES

**THE RICH TEXTURE OF STUCCO WITH THE
CONVENIENCE OF A METAL WALL PANEL SYSTEM**



- Easy installation with concealed fasteners
- New clip-less design
- Panels to 26' length
- 20 year warranty
- 24 standard colors (custom colors available)
- Works great as a Soffit panel also

TextureClad provides a textured finish in a stackable, lightweight metal wall panel system provides the appearance of stucco without the additional cost.



PRE-FINISHED PANELS ARE EASY TO ASSEMBLE AND CAN BE INSTALLED REGARDLESS OF CLIMATE OR WEATHER CONDITIONS

TEXTURECLAD

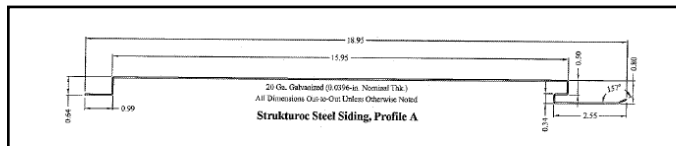
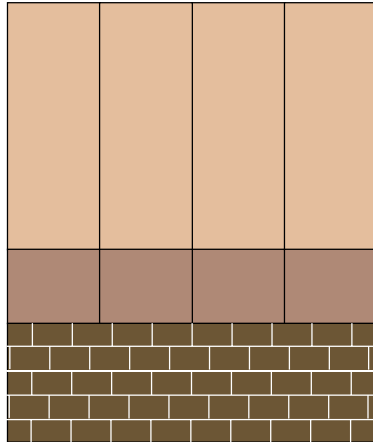
The stucco-like appearance of TextureClad will satisfy most local building ordinances that prohibit other metal wall panel applications. These panels are durable and provide protection from ultraviolet rays.

Each TextureClad panel is manufactured from 20-gauge galvanized steel. Panel width installed is 16". Both top and bottom of every panel has a 5/8" fold back. Formed ends allow the panel to nest end-to-end for stacking up a vertical wall, allowing for taller elevation applications. Installation of panels over a weatherproof membrane is recommended. Panel lengths range from 14" to 26'.

Primed and painted on both sides, the baked-on base coat is specifically formulated to adhere to the textured finish. Factory applied textured finish is a proprietary formula. The finish is resistant water, cracking, checking, chalking, mildew and loss of adhesion.

The panels are available in 24 unique colors, ask for VP color guide #6023.

TextureClad comes with a 20-year warranty for the panel and finish.



FEATURES

- 16" coverage with lengths up to 26'
- Concealed fastener installation
- 24 colors
- Durable, attractive finish
- Lightweight
- Low-maintenance
- Can be used as soffit



The Ultimate Building Solution
VP Buildings
3200 Players Club Circle
Memphis, TN 38125
1-800-238-3246 • vp.com
2094 Revised 7/07



QUALITY CERTIFICATION
METAL BUILDINGS